

Sycamore Industrial Park – Flora, IN



Convenient Location...

The Sycamore Industrial Park has a great location for truck transportation. It is:

- * *At the intersection of state road 18 and state road 75, in Flora,*
- * *Only 8 miles from the new 4-lane Hoosier Heartland Highway at Delphi, and*
- * *Just 16 miles from I-65 in Lafayette via SR 26.*

Flexible Space...

The Sycamore Industrial Park's 15 suites and 75,000 SF offer a wide variety of configuration options to meet your needs. From small industrial suites larger warehouse space, the Sycamore Industrial Park can meet your needs.

- * *75,000 total SF*
- * *15 Individual Suites that may be combined or stand-alone*
- * *Raised and ground-level docks available (entrances can be customized)*
- * *Owner will also customize available space and configurations to meet client needs*

For more information, please contact:

The CARROLL COUNTY ECONOMIC DEVELOPMENT CORPORATION

PO BOX 83, 241 N. Heartland Drive, Delphi, IN 46923
765-564-2060 or 765-714-7012 (C)
e-mail: lwalls@carrollcountyedc.com

Interior Views...



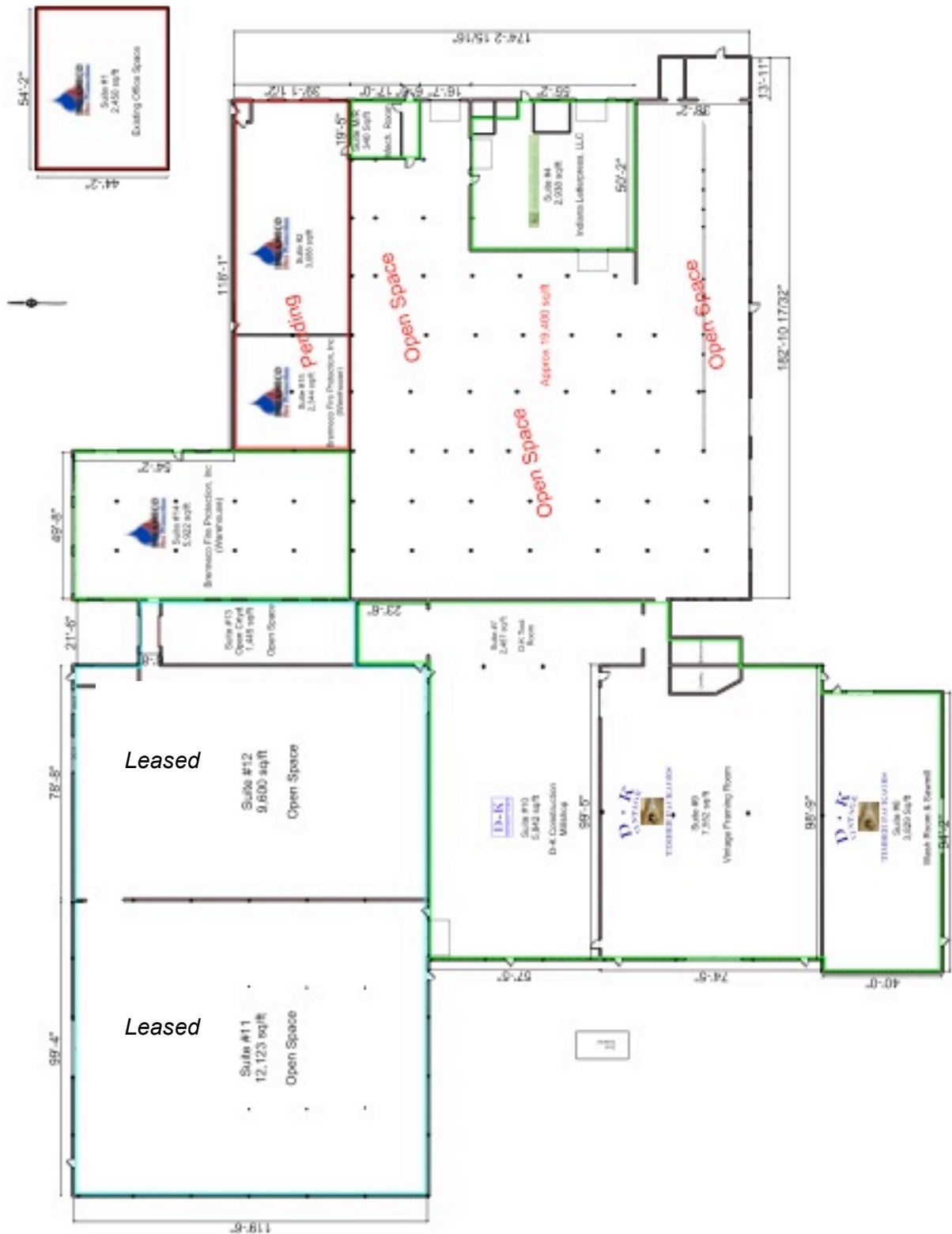
View of suite 12. It has 9,600 SF of available space with 18' center ceiling height.



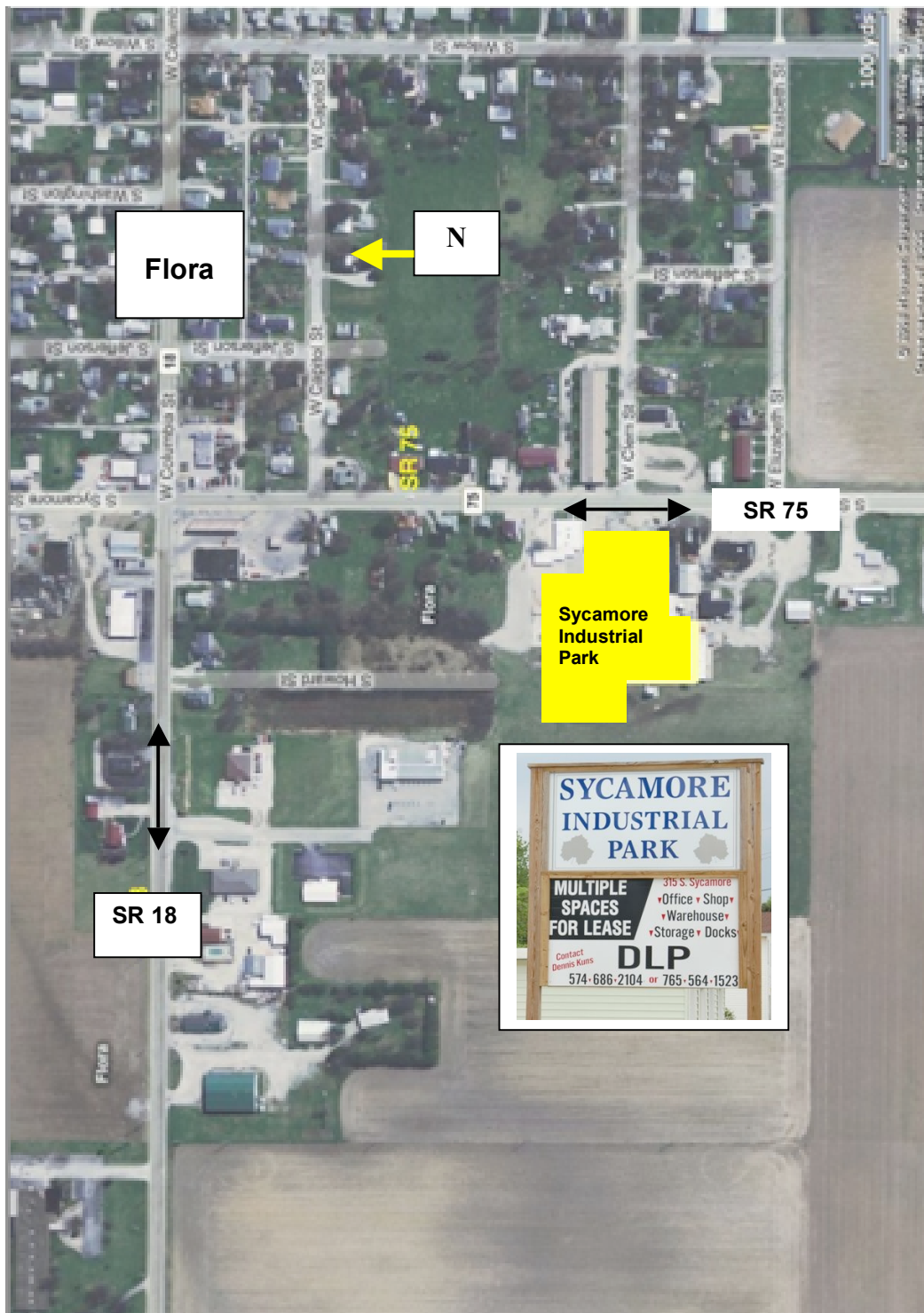
View of suite 11. This suite has 12,123 SF of space and a center ceiling height of 18'.

For more information, contact: Carroll County Economic Development
lwalls@carrollcountyedc.com, 765-564-2060

Sycamore Industrial Park, 315 S. Sycamore St., Flora, IN



For more information, contact: Carroll County Economic Development
lwalls@carrollcountyedc.com, 765-564-2060.



For more information, contact: Carroll County Economic Development
lwalls@carrollcountyedc.com, 765-564-2060.